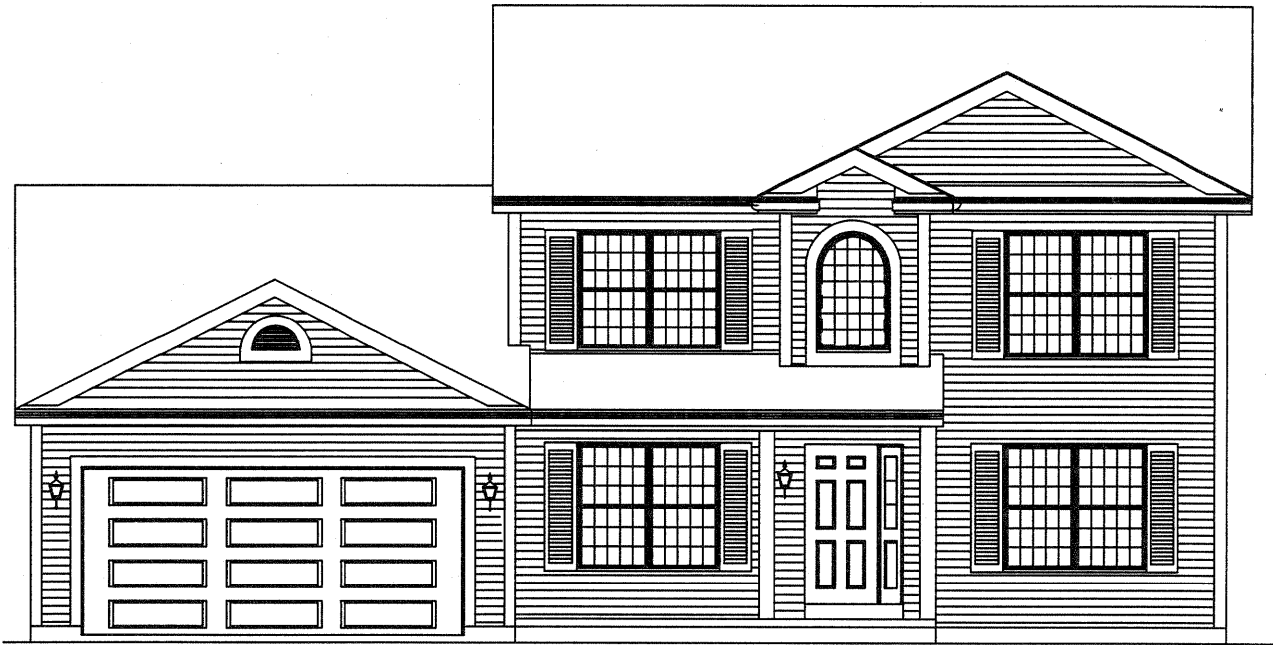


The SEVILLE



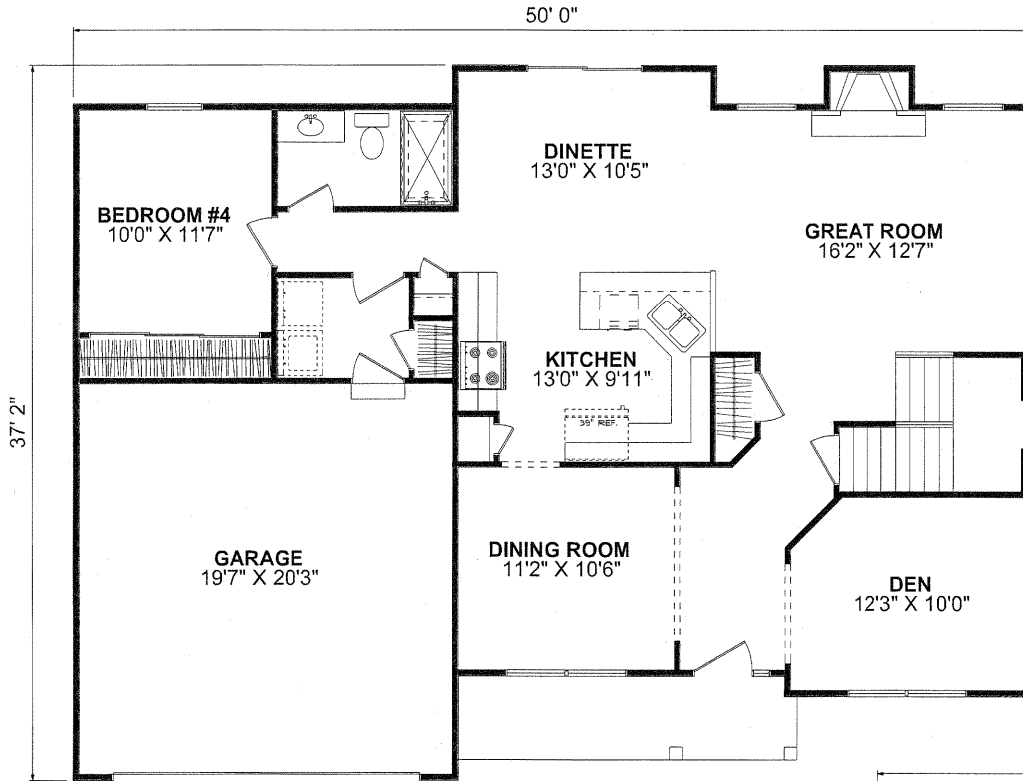
STANDARD FRONT ELEVATION

 **FORRESTER
WEHRLE HOMES**

Since 1965

The SEVILLE

4 Bedroom, 3 Bath - 2Story - Living Space: 2,116 Sq. Ft. - Basement: 1,210 Sq. Ft.



FIRST FLOORPLAN

SPECIAL FEATURES

- DEN
- FIRST FLOOR GUEST BEDROOM
- OPEN FOYER
- CORNER GARDEN TUB



SECOND FLOORPLAN

4331 Keystone Drive - Maumee, Ohio 43537

Phone: 419-841-6691 - Toll Free: 1-877-841-6691 - Fax: 419-841-9608

www.forresterwehrle.com



This sheet is for illustrative purposes only and is not intended to be part of a legal contract. Floor plans and standard features may vary on actual structure and are subject to change without notice. Some items represented, such as landscaping, architectural details, or other special features may be optional and are available only at additional cost.