

*The*  
**SAN MATEO EXECUTIVE**

---

---



STANDARD FRONT ELEVATION

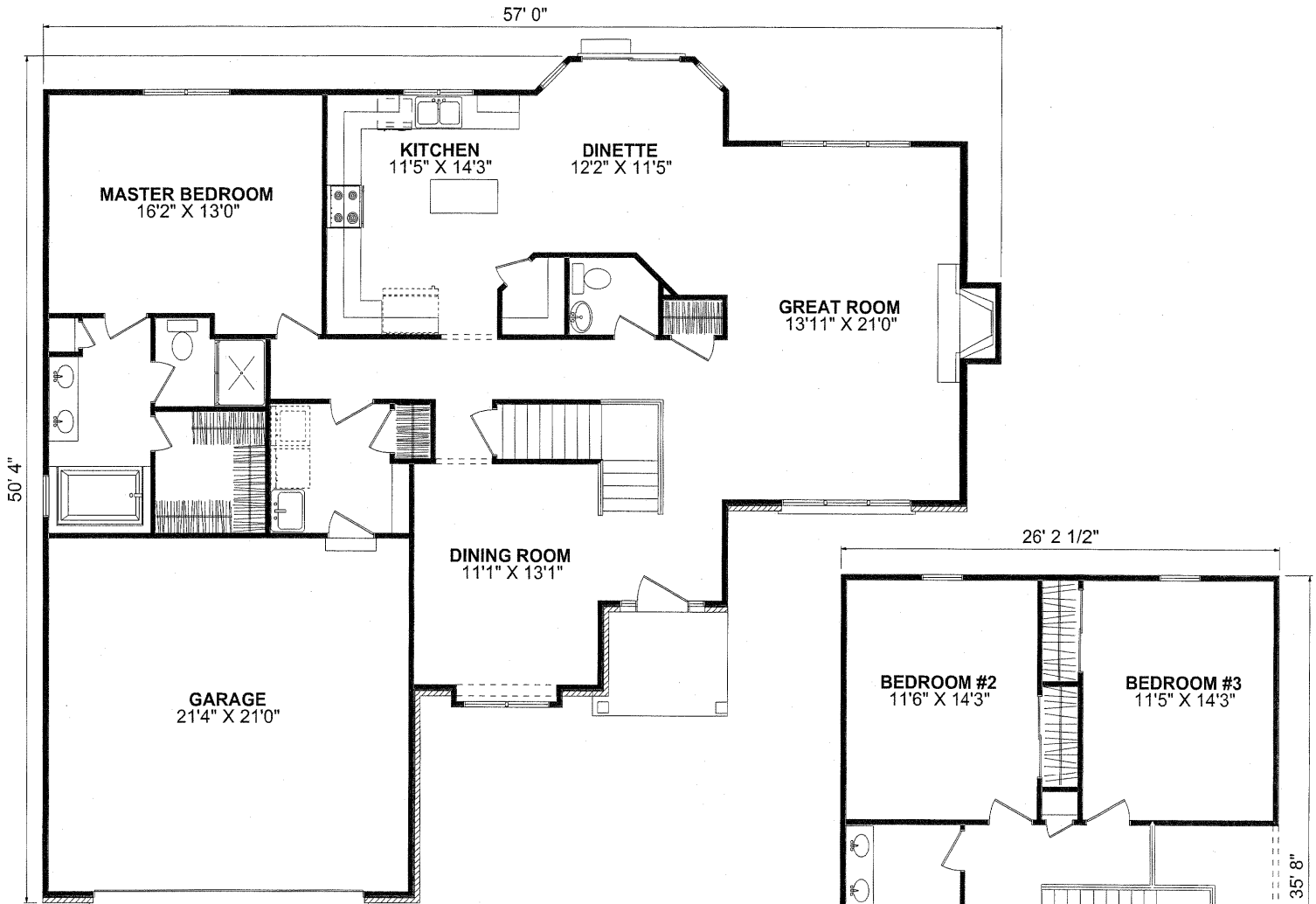
---

 **FORRESTER  
WEHRLE** HOMES  
Since 1965

---

# The SAN MATEO EXECUTIVE

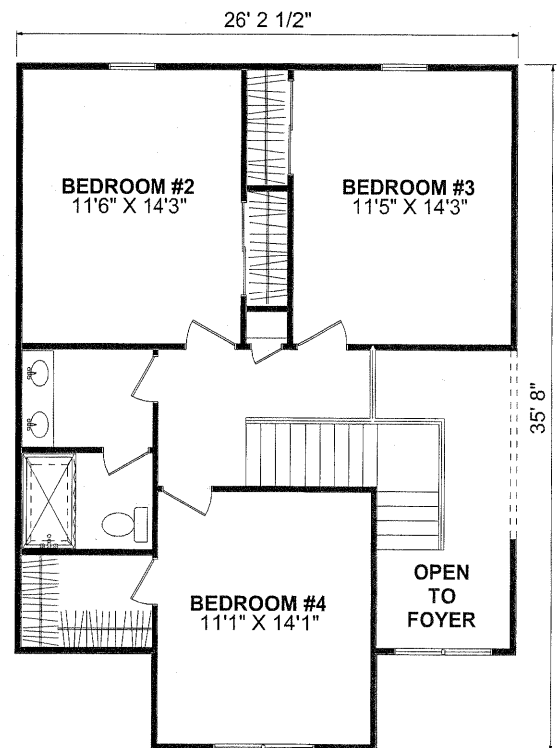
4 Bedroom, 2-1/2 Bath - 2Story - Living Space: 2,309 Sq. Ft. - Basement: 1,539 Sq. Ft.



FIRST FLOORPLAN

## SPECIAL FEATURES

- VAULTED GREAT ROOM
- FIRST FLOOR MASTER BEDROOM
- TREY/PAN CEILING IN MASTER BEDROOM
- TREY CEILING IN DINING ROOM
- GAS OR WOOD BURNING FIREPLACE



SECOND FLOORPLAN

4331 Keystone Drive - Maumee, Ohio 43537

Phone: 419-841-6691 - Toll Free: 1-877-841-6691 - Fax: 419-841-9608

[www.forresterwehrle.com](http://www.forresterwehrle.com)



This sheet is for illustrative purposes only and is not intended to be part of a legal contract. Floor plans and standard features may vary on actual structure and are subject to change without notice. Some items represented, such as landscaping, architectural details, or other special features may be optional and are available only at additional cost.