

*The*  
**PROVIDENCE EXECUTIVE**

---

---



STANDARD FRONT ELEVATION

---



**FORRESTER  
WEHRLE HOMES**

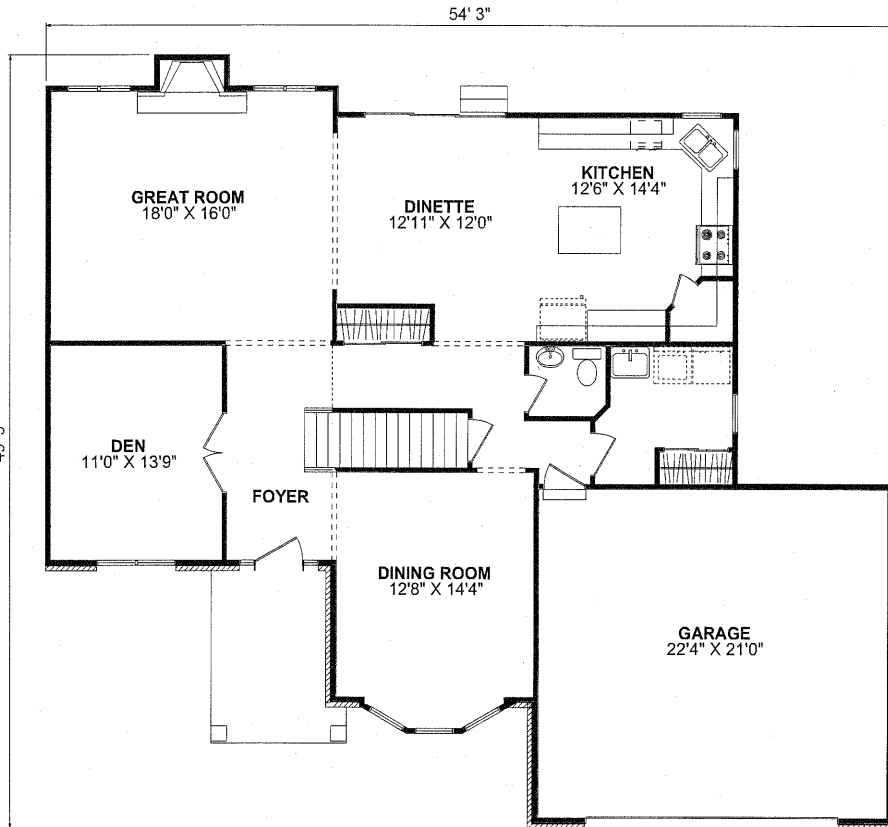
Since 1965

---

The

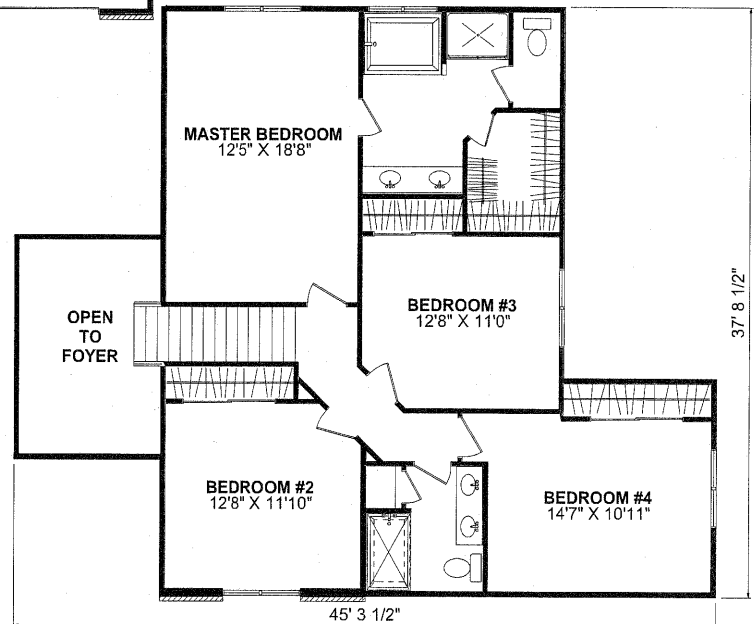
# PROVIDENCE EXECUTIVE

4 Bedroom, 2-1/2 Bath - 2Story - Living Space: 2,513 Sq. Ft. - Basement: 1,397 Sq. Ft.



### SPECIAL FEATURES

- VAULTED FOYER & BEDROOM #2
- TREY CEILING IN DINING ROOM
- PAN CEILING IN GREAT ROOM & MASTER BEDROOM
- GAS OR WOOD BURNING FIREPLACE



4331 Keystone Drive - Maumee, Ohio 43537

Phone: 419-841-6691 - Toll Free: 1-877-841-6691 - Fax: 419-841-9608

[www.forresterwehrle.com](http://www.forresterwehrle.com)



This sheet is for illustrative purposes only and is not intended to be part of a legal contract. Floor plans and standard features may vary on actual structure and are subject to change without notice. Some items represented, such as landscaping, architectural details, or other special features may be optional and are available only at additional cost.