

*The*  
**NEWPORT IV**

---

---



STANDARD FRONT ELEVATION

 **FORRESTER  
WEHRLE HOMES**

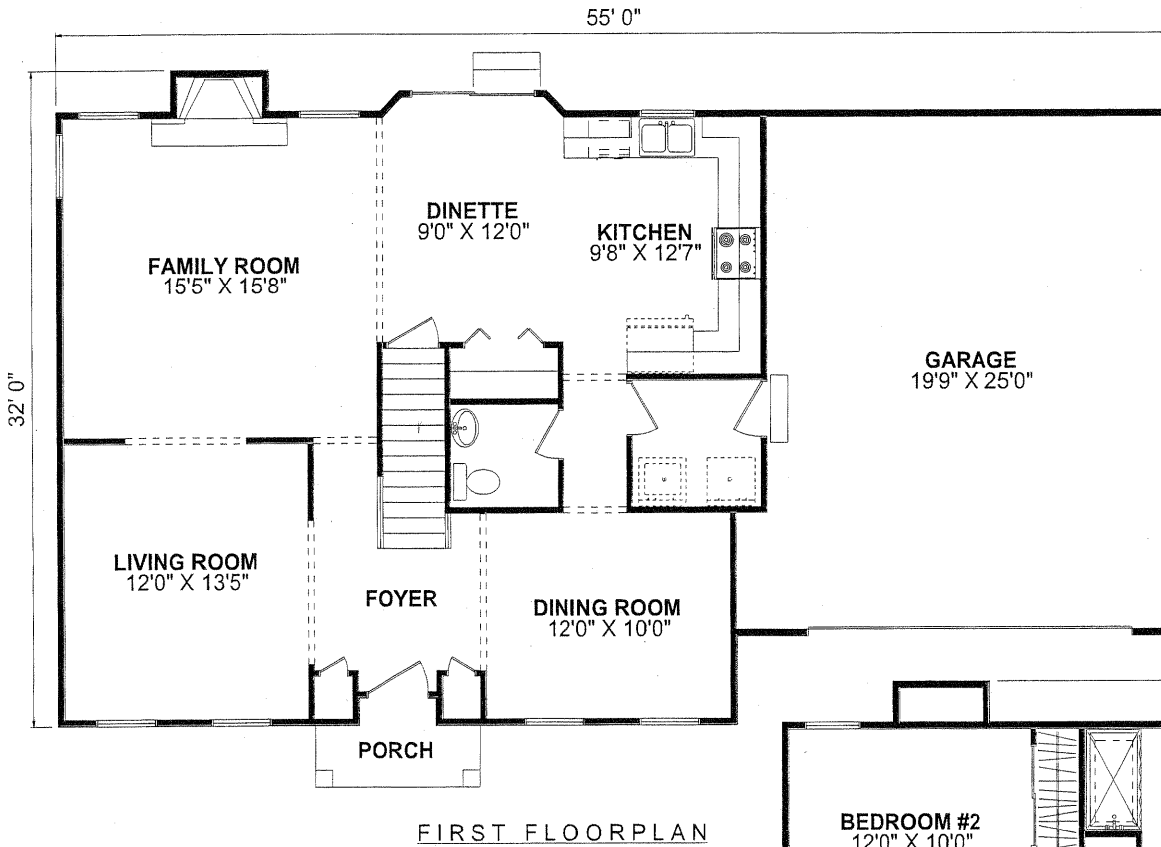
Since 1965

---

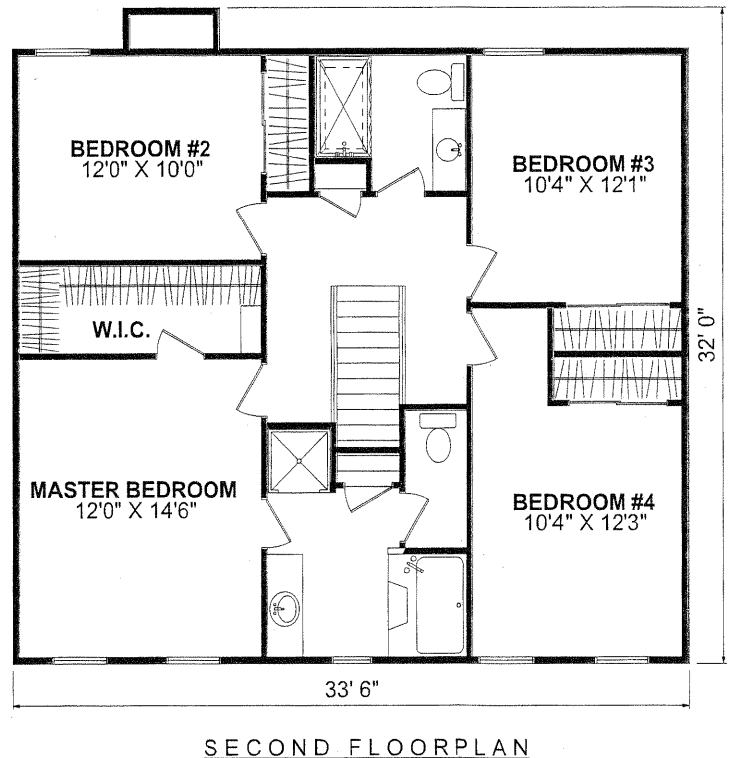
---

# The NEWPORT IV

4 Bedroom, 2-1/2 Bath - 2Story - Living Space: 2,041 Sq. Ft. - Basement: 1,030 Sq. Ft.



SPECIAL FEATURES  
- WALK OUT BAY IN DINETTE



6800 W. Central Ave. - Toledo, Ohio 43617

Phone: 419-841-6691 - Toll Free: 1-877-841-6691 - Fax: 419-841-9608

[www.forresterwehrle.com](http://www.forresterwehrle.com)



This sheet is for illustrative purposes only and is not intended to be part of a legal contract. Floor plans and standard features may vary on actual structure and are subject to change without notice. Some items represented, such as landscaping, architectural details, or other special features may be optional and are available only at additional cost.