

*The*  
**KENWOOD II EXECUTIVE**

---

---



STANDARD FRONT ELEVATION

 **FORRESTER  
WEHRLE** HOMES

Since 1965

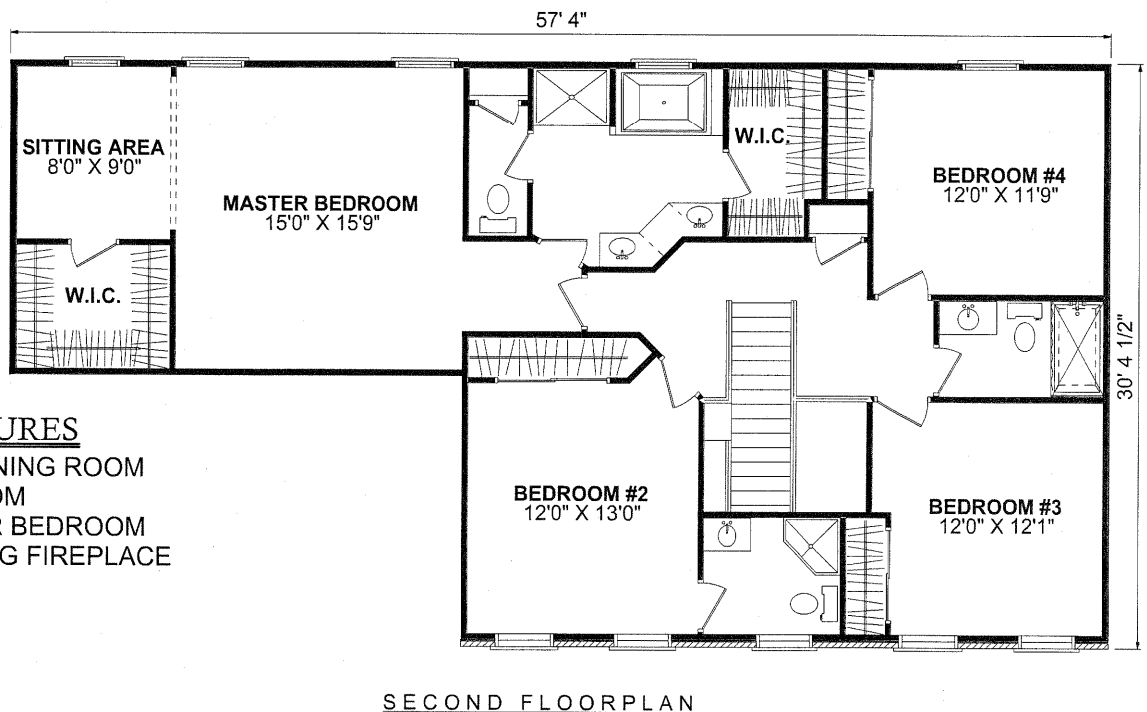
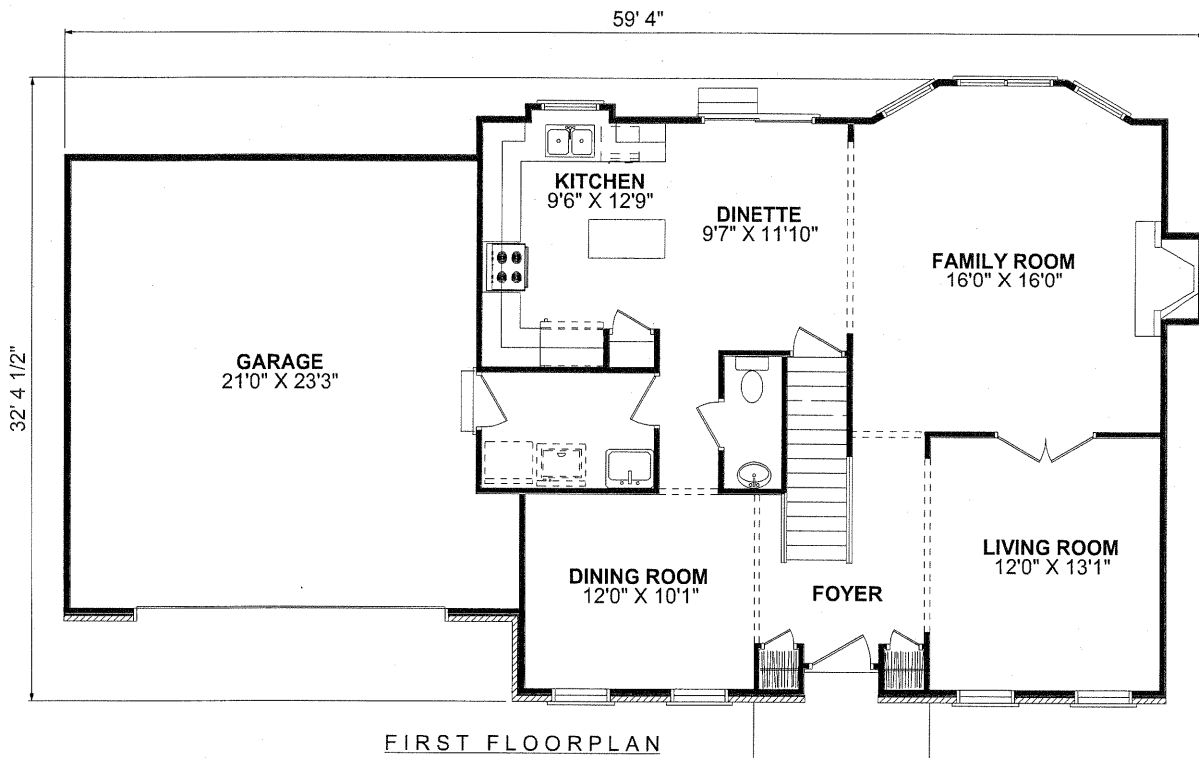
---

---

The

# KENWOOD II EXECUTIVE

4 Bedroom, 3-1/2 Bath - 2Story - Living Space: 2,437 Sq. Ft. - Basement: 1,059 Sq. Ft.



### SPECIAL FEATURES

- TREY CEILINGS IN DINING ROOM & LIVING ROOM
- TREY/PAN IN MASTER BEDROOM
- GAS OR WOOD BURNING FIREPLACE

4331 Keystone Drive - Maumee, Ohio 43537

Phone: 419-841-6691 - Toll Free: 1-877-841-6691 - Fax: 419-841-9608

[www.forresterwehrle.com](http://www.forresterwehrle.com)



This sheet is for illustrative purposes only and is not intended to be part of a legal contract. Floor plans and standard features may vary on actual structure and are subject to change without notice. Some items represented, such as landscaping, architectural details, or other special features may be optional and are available only at additional cost.