

The GENEVA



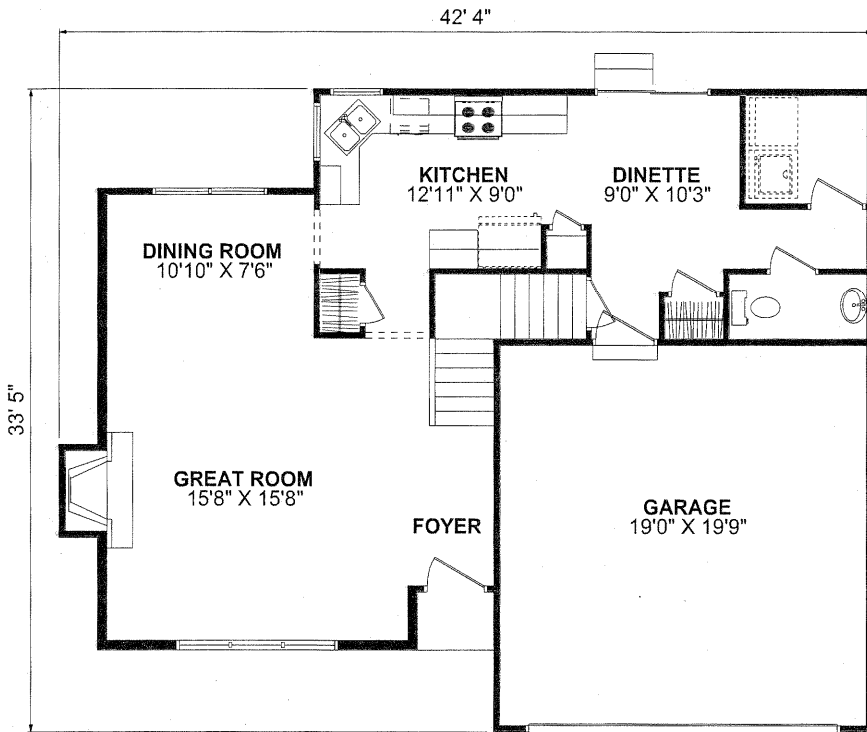
STANDARD FRONT ELEVATION

 **FORRESTER
WEHRLE HOMES**

Since 1965

The GENEVA

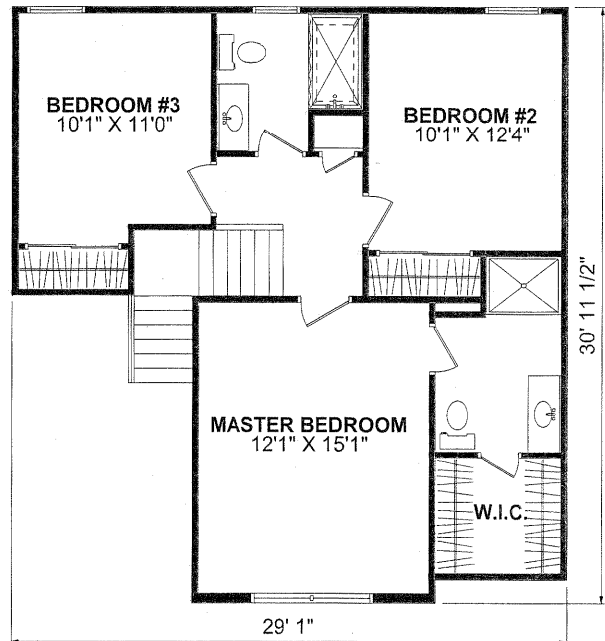
3 Bedroom, 2-1/2 Bath - 2Story - Living Space: 1,557 Sq. Ft. - Basement: 813 Sq. Ft.



FIRST FLOORPLAN

SPECIAL FEATURES

- VAULTED FAMILY ROOM, DINING ROOM, AND MASTER BEDROOM
- TRANSOMS IN GREAT ROOM & FOYER
- 1/2 ROUND WINDOW IN GREAT ROOM & MASTER BEDROOM



SECOND FLOORPLAN

4331 Keystone Drive - Maumee, Ohio 43537

Phone: 419-841-6691 - Toll Free: 1-877-841-6691 - Fax: 419-841-9608

www.forresterwehrle.com



EQUAL HOUSING
OPPORTUNITY

This sheet is for illustrative purposes only and is not intended to be part of a legal contract. Floor plans and standard features may vary on actual structure and are subject to change without notice. Some items represented, such as landscaping, architectural details, or other special features may be optional and are available only at additional cost.