

*The*  
**FAYETTE**

---

---



STANDARD FRONT ELEVATION

---

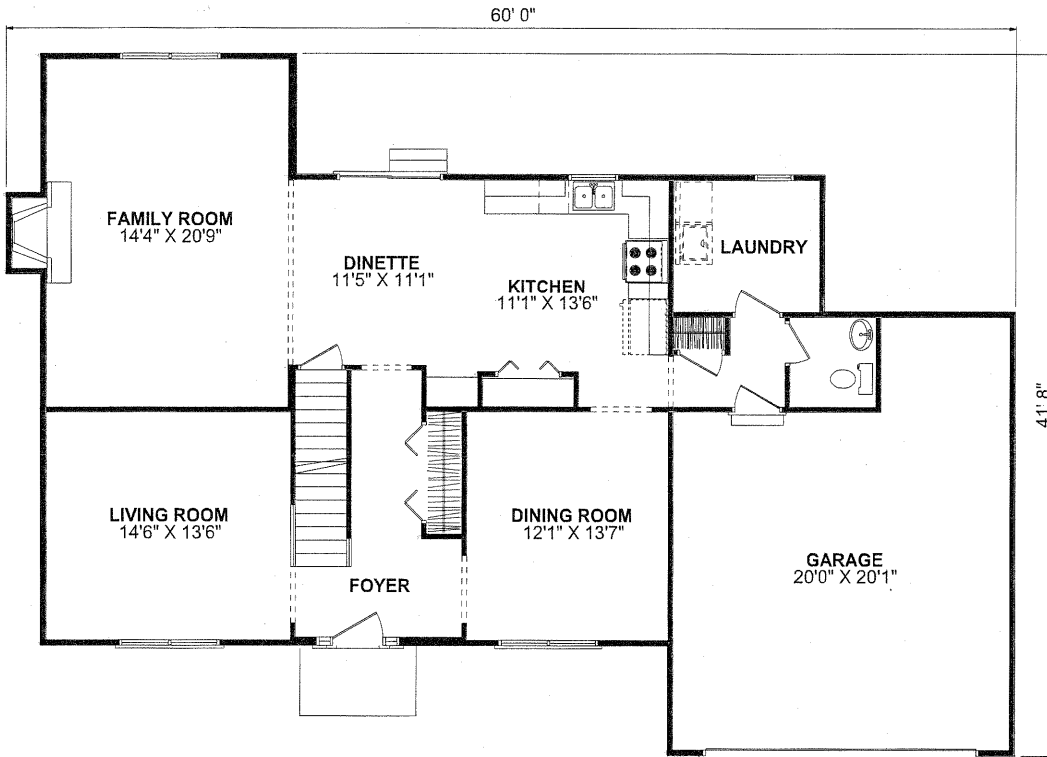
 **FORRESTER  
WEHRLE** HOMES

Since 1965

---

# The FAYETTE

4 Bedroom, 2-1/2 Bath - 2Story - Living Space: 2,476 Sq. Ft. - Basement: 1,316 Sq. Ft.



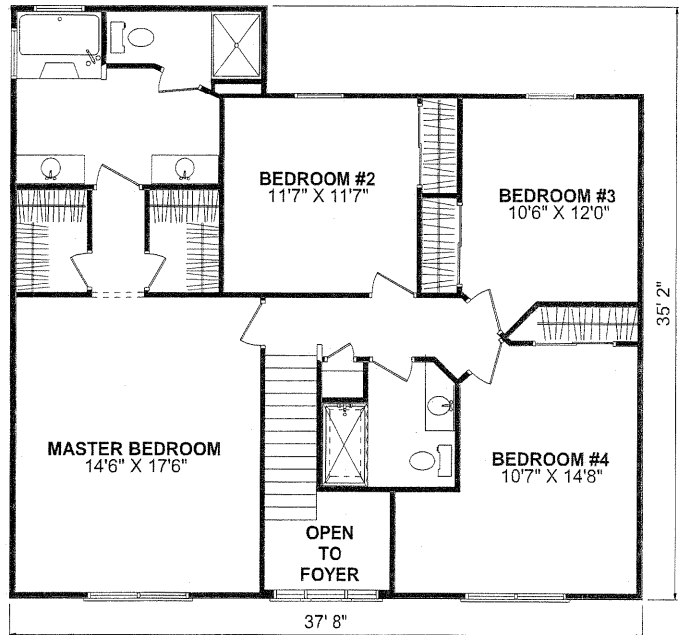
FIRST FLOORPLAN

## SPECIAL FEATURES

- OPEN FOYER
- TRANSOM OVER FRONT DOOR
- DOUBLE W.I.C. IN MASTER SUITE
- DENTIL MOLDING ON FRONT EXTERIOR

## AVAILABLE OPTIONS

- MASTER BATHROOM
- FRONT ELEVATION



SECOND FLOORPLAN

4331 Keystone Drive - Maumee, Ohio 43537

Phone: 419-841-6691 - Toll Free: 1-877-841-6691 - Fax: 419-841-9608

[www.forresterwehrle.com](http://www.forresterwehrle.com)



This sheet is for illustrative purposes only and is not intended to be part of a legal contract. Floor plans and standard features may vary on actual structure and are subject to change without notice. Some items represented, such as landscaping, architectural details, or other special features may be optional and are available only at additional cost.