

*The*  
**CHADWYCK II EXECUTIVE**

---



STANDARD FRONT ELEVATION

 **FORRESTER  
WEHRLE HOMES**

Since 1965

---

# The CHADWYCK II EXECUTIVE

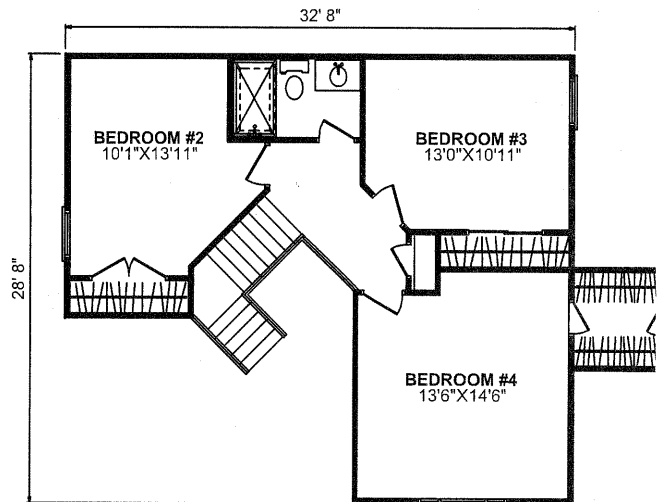
4 Bedroom, 2-1/2 Bath - 2Story - Living Space: 2,402 Sq. Ft. - Basement: 1,663 Sq. Ft.



FIRST FLOOR PLAN

### SPECIAL FEATURES

- VAULTED FAMILY ROOM
- TREY CEILING IN MASTER BEDROOM
- FIRST FLOOR MASTER SUITE
- TWO STORY LIVING ROOM
- GAS OR WOOD BURNING FIREPLACE



SECOND FLOOR PLAN

4331 Keystone Drive - Maumee, Ohio 43537

Phone: 419-841-6691 - Toll Free: 1-877-841-6691 - Fax: 419-841-9608

[www.forresterwehrle.com](http://www.forresterwehrle.com)



EQUAL HOUSING  
OPPORTUNITY

This sheet is for illustrative purposes only and is not intended to be part of a legal contract. Floor plans and standard features may vary on actual structure and are subject to change without notice. Some items represented, such as landscaping, architectural details, or other special features may be optional and are available only at additional cost.