

# *The* CATALINA

---

---



STANDARD FRONT ELEVATION

---



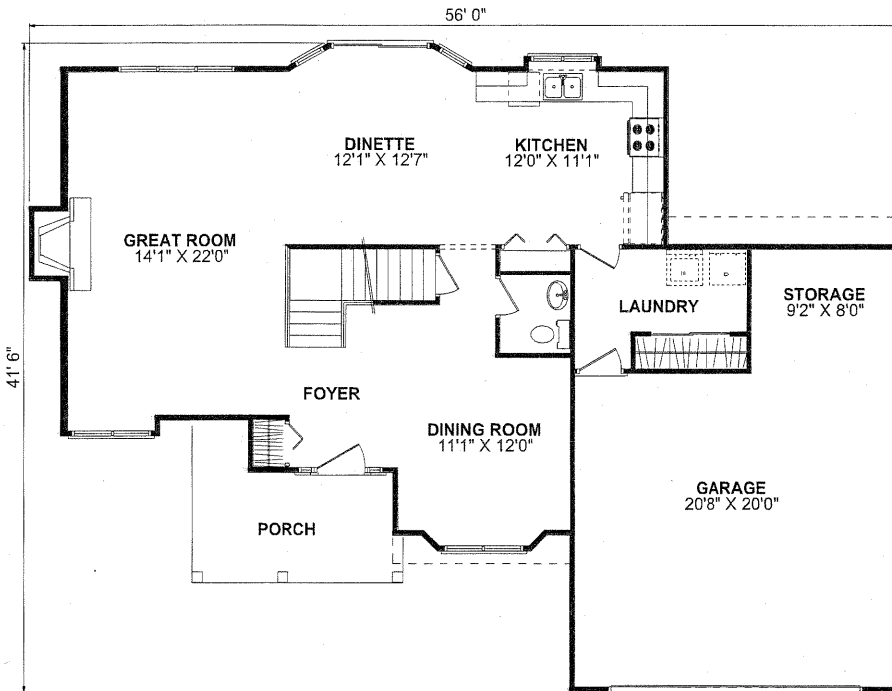
**FORRESTER  
WEHRLE HOMES**

Since 1965

---

# The CATALINA

4 Bedroom, 2-1/2 Bath - 2 Story - Living Space: 2105 Sq. Ft. - Basement: 1032 Sq. Ft.



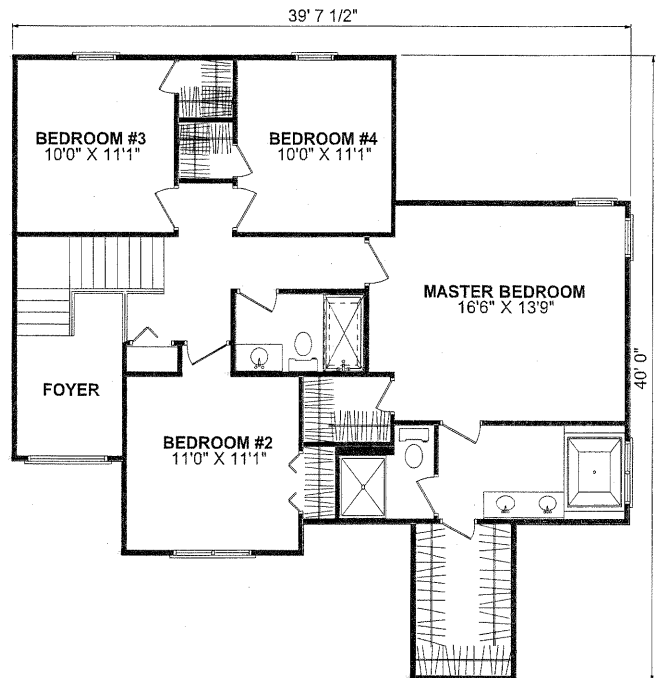
FIRST FLOORPLAN

### SPECIAL FEATURES

- VAULTED GREAT ROOM
- FULL BASEMENT
- TURNED STAIRCASE

### OPTIONAL FEATURES SHOWN

- GAS OR WOOD BURNING FIREPLACE



SECOND FLOORPLAN

4331 Keystone Drive - Maumee, Ohio 43537

Phone: 419-841-6691 - Toll Free: 1-877-841-6691 - Fax: 419-841-9608

[www.forresterwehrle.com](http://www.forresterwehrle.com)



EQUAL HOUSING  
OPPORTUNITY

This sheet is for illustrative purposes only and is not intended to be part of a legal contract. Floor plans and standard features may vary on actual structure and are subject to change without notice. Some items represented, such as landscaping, architectural details, or other special features may be optional and are available only at additional cost.