

The
BELMONT EXECUTIVE



STANDARD FRONT ELEVATION

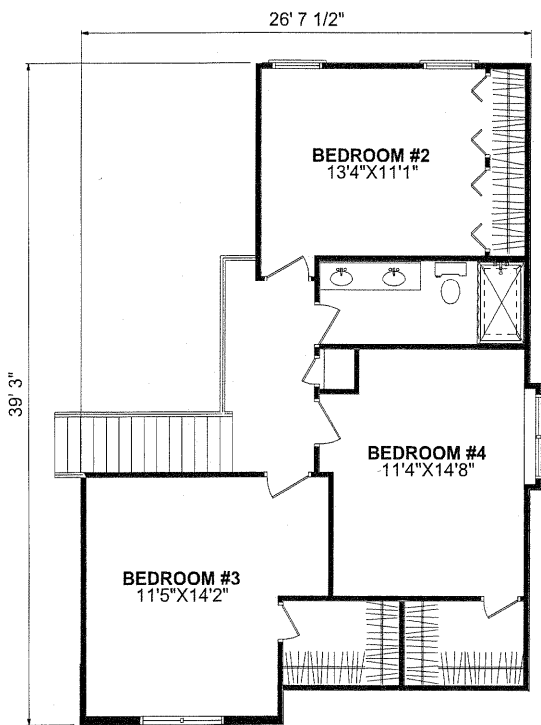
 **FORRESTER
WEHRLE HOMES**

Since 1965

The

BELMONT EXECUTIVE

4 Bedroom, 2-1/2 Bath - 2Story - Living Space: 2,535 Sq. Ft. - Basement: 1,703 Sq. Ft.



SPECIAL FEATURES

- VAULTED GREAT ROOM, LIVING ROOM, & BEDROOM #3
- DOUBLE TREY CEILINGS IN MASTER BEDROOM & DINING ROOM
- GAS OR WOOD BURNING FIREPLACE

AVAILABLE OPTIONS

- BRICK PORTICO OVER FRONT PORCH

4331 Keystone Drive - Maumee, Ohio 43537

Phone: 419-841-6691 - Toll Free: 1-877-841-6691 - Fax: 419-841-9608

www.forresterwehrle.com



EQUAL HOUSING OPPORTUNITY

This sheet is for illustrative purposes only and is not intended to be part of a legal contract. Floor plans and standard features may vary on actual structure and are subject to change without notice. Some items represented, such as landscaping, architectural details, or other special features may be optional and are available only at additional cost.