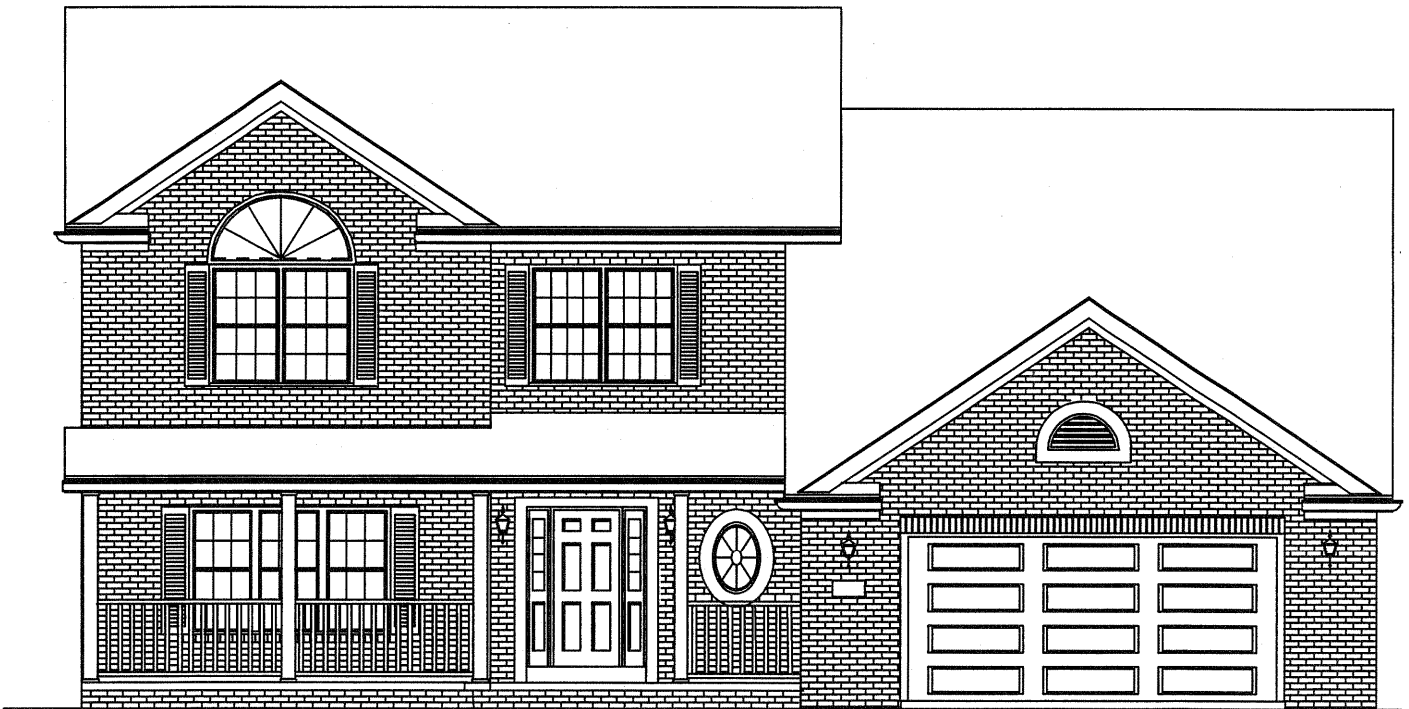


*The*  
**ASHLEY II EXECUTIVE**

---

---



STANDARD FRONT ELEVATION

---

 **FORRESTER  
WEHRLE** HOMES

Since 1965

---

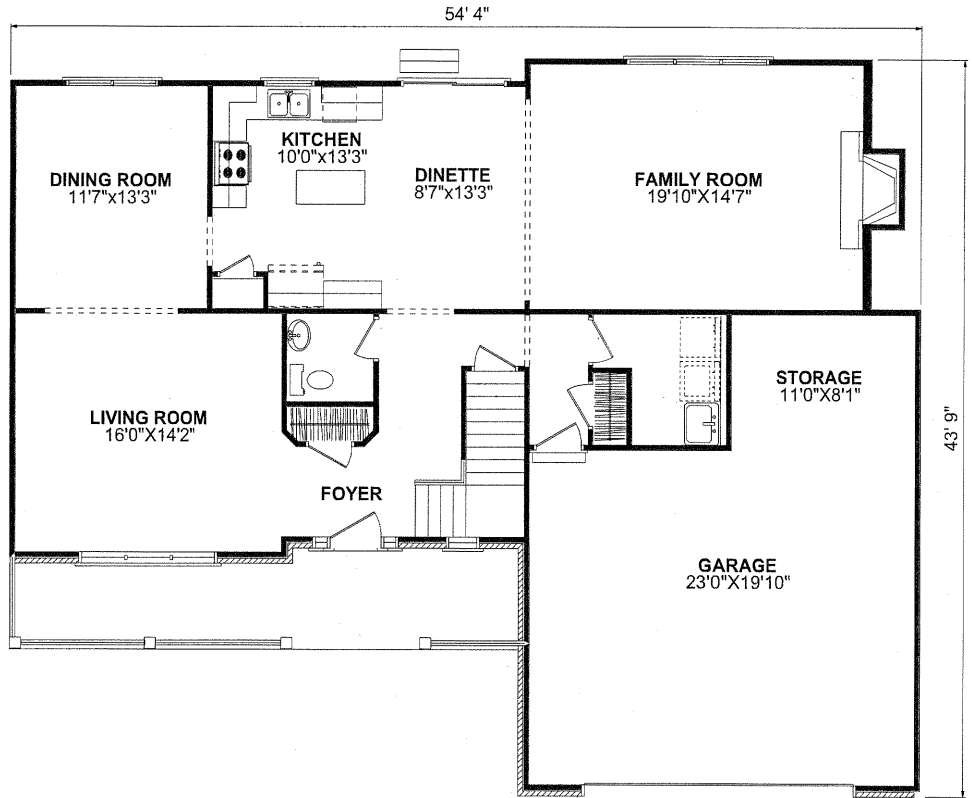
The

# ASHLEY II EXECUTIVE

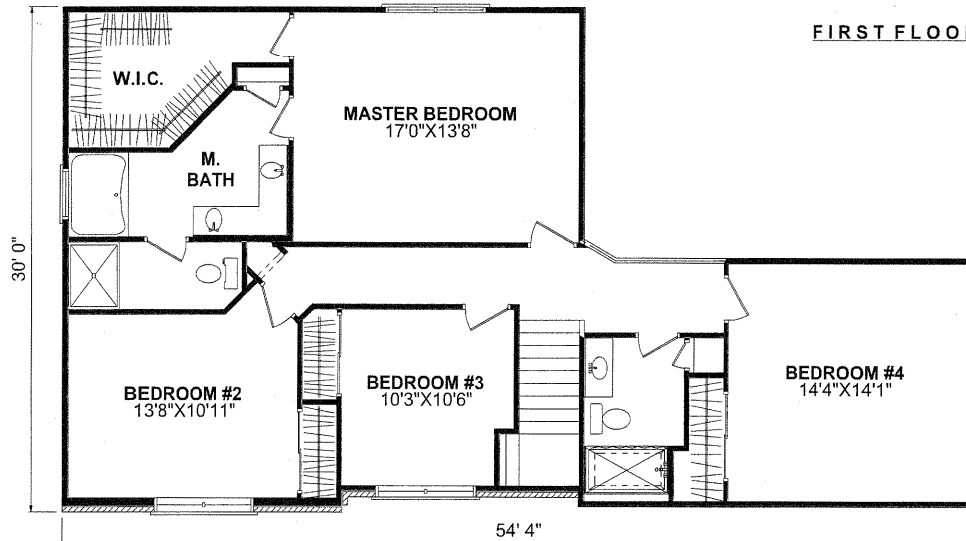
4 Bedroom, 2-1/2 Bath - 2Story - Living Space: 2,522 Sq. Ft. - Basement: 1,288 Sq. Ft.

## SPECIAL FEATURES

- VAULTED GREAT ROOM & BEDROOM #2
- TREY CEILING IN DINING ROOM
- TREY/PAN CEILING IN MASTER BEDROOM
- GAS OR WOOD BURNING FIREPLACE



FIRST FLOOR PLAN



SECOND FLOOR PLAN

4331 Keystone Drive - Maumee, Ohio 43537

Phone: 419-841-6691 - Toll Free: 1-877-841-6691 - Fax: 419-841-9608

[www.forresterwehrle.com](http://www.forresterwehrle.com)



This sheet is for illustrative purposes only and is not intended to be part of a legal contract. Floor plans and standard features may vary on actual structure and are subject to change without notice. Some items represented, such as landscaping, architectural details, or other special features may be optional and are available only at additional cost.