

The
AMELIA EXECUTIVE



STANDARD FRONT ELEVATION



**FORRESTER
WEHRLE HOMES**

Since 1965

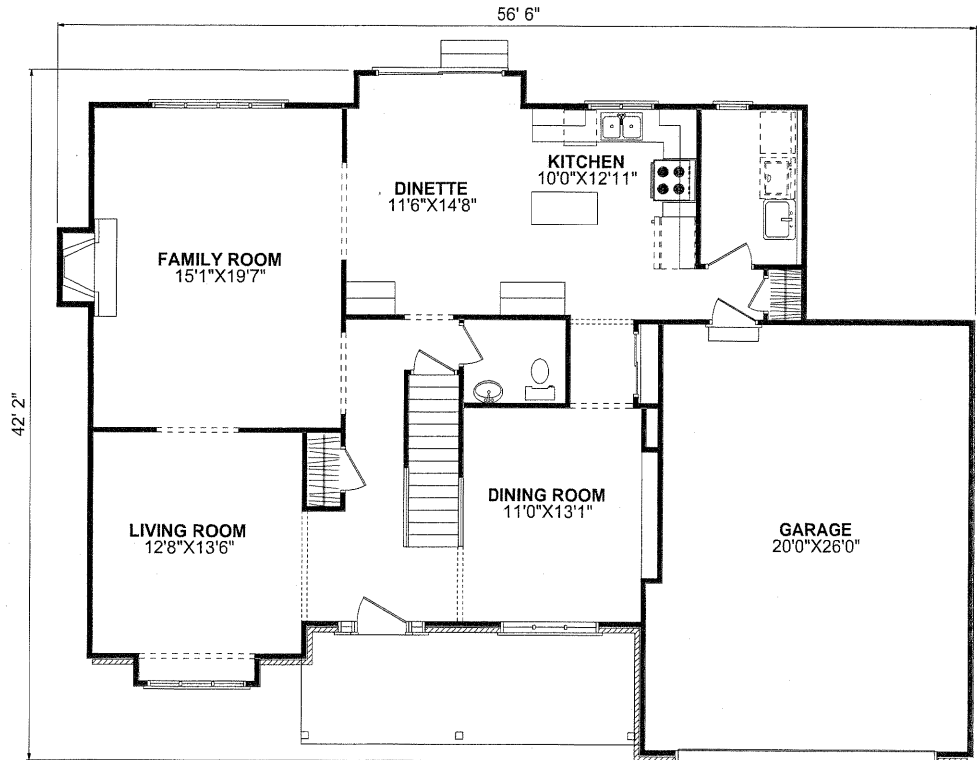
The AMELIA EXECUTIVE

4 Bedroom, 2-1/2 Bath - 2Story - Living Space: 2,395 Sq. Ft. - Basement: 1,284 Sq. Ft.



SECOND FLOORPLAN

- SPECIAL FEATURES**
- VAULTED MASTER BEDROOM
W/ HALF ROUND GLASS WINDOW
 - TREY CEILING IN DINING ROOM
 - GAS FIREPLACE



FIRST FLOORPLAN

4331 Keystone Drvie - Maumee, Ohio 43537

Phone: 419-841-6691 - Toll Free: 1-877-841-6691 - Fax: 419-841-9608

www.forresterwehrle.com



This sheet is for illustrative purposes only and is not intended to be part of a legal contract. Floor plans and standard features may vary on actual structure and are subject to change without notice. Some items represented, such as landscaping, architectural details, or other special features may be optional and are available only at additional cost.